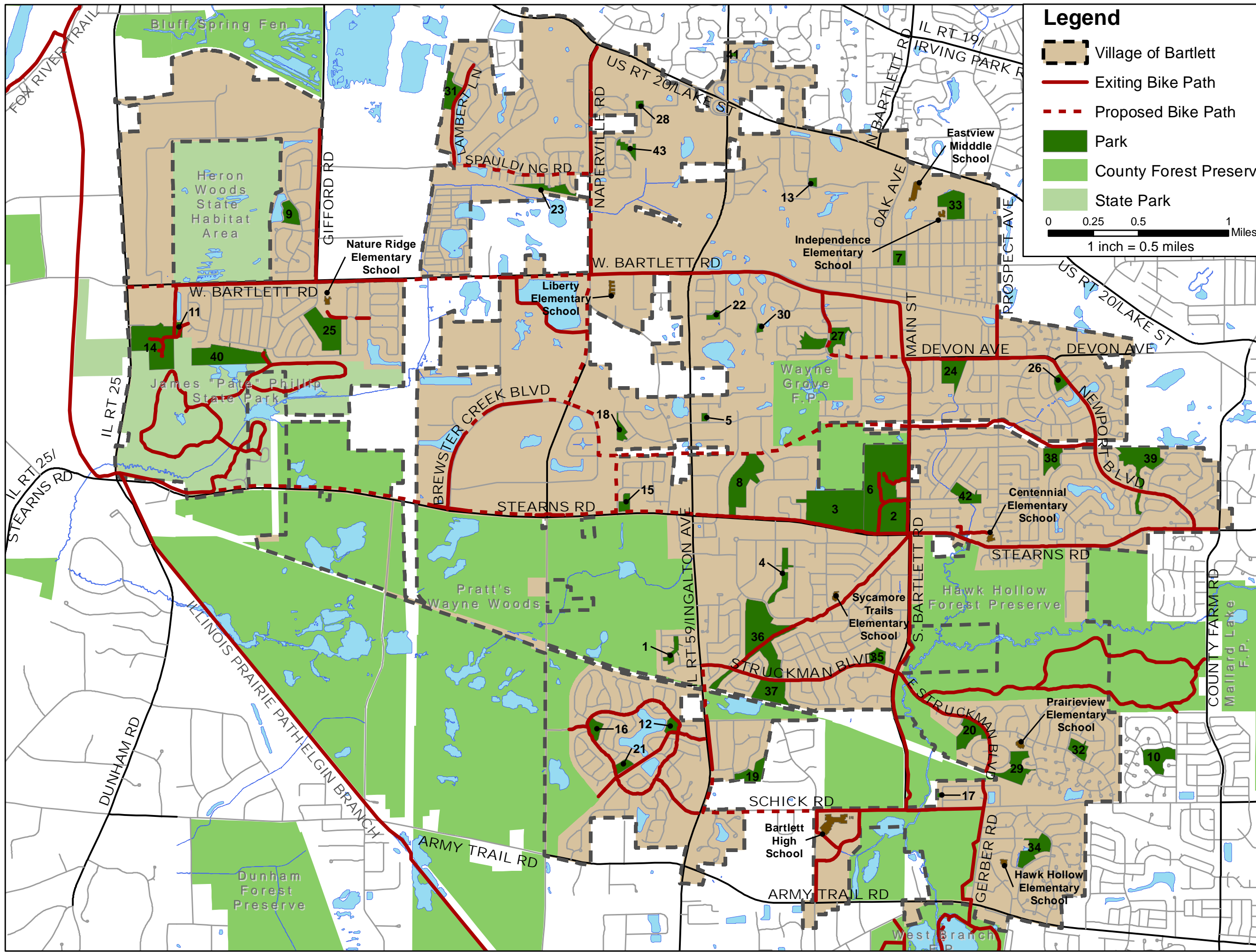


# Village of Bartlett Bike Path Map



## Legend

- Village of Bartlett
  - Existing Bike Path
  - Proposed Bike Path
  - Park
  - County Forest Preserve
  - State Park
- 0 0.25 0.5 1 Miles  
1 inch = 0.5 miles



#	Park Name
1	Ancient Oaks Park
2	Apple Orchard Community Park
3	Apple Orchard Community Park - West
4	Apple Orchard Greenway
5	Auburn Hills Park
6	Bartlett Aquatic Center
7	Bartlett Park
8	Beaver Pond
9	Blue Heron Park
10	Camelot on Mayfair
11	Coyote Junction
12	Fairview Park
13	Firefighters Park
14	Glen A. Koehler Fields
15	Green Meadows Park
16	Happy Trails Park
17	Hawk View Park
18	Hidden Oaks Park
19	Hilltop Park
20	Humbracht Park
21	Huntington Meadows
22	Kermi's Korner
23	Kjar Park
24	Leiseberg Park
25	Nature Ridge Park
26	Newport Park
27	Oak Grove Park
28	Peregrine Park
29	Prairieview Park
30	Regency Oaks Park Site
31	Riley's Run
32	Schick Park
33	Schoppe Park
34	Schrader Park
35	Struckman Basin
36	Sunrise Park
37	Sunset Park
38	Tallgrass Park
39	Trails End Park
40	Valley View Park
41	Walnut Corner
42	Winding Creek Commons
43	Windy Oaks Park

# James "Pate" Philip State Park



- **Bluestem Trail:** 1.49 miles  
 Bluestem circles the marsh and the state-designated Land and Water Reserve and visits the point where the three counties meet. A short trail spur provides an overlook of the marsh.
- **Blazing Star Trail:** 1.49 miles  
 This trail follows the edge of the flood plain and the north boundary of the park past a housing development. It includes a connector trail from the Bluestem Trail.
- **Indigo Trail:** .67 miles  
 Indigo traces the south edge of the creek and is a quick hike from the picnic area. Drain tile removal and breakage will help create wet spots and habitat for wetland plants.
- **Connector Trail:** .12 miles  
 This trail links the Indigo and Bluestem trails and crosses Brewster Creek by bridge.

**Key**

Information	Observation Area
Parking	Hiking
Water	Biking
Modern Restrooms	Skiing
Shelter	